

SLOUGH MULTIFUEL EXTENSION PROJECT

Planning Inspectorate Ref: EN010129

The Slough Multifuel Extension Order

Land at 342 Edinburgh Avenue, Slough Trading Estate, Slough

**Document Ref: 7.4.7 Condition 4 - Living Wall – Virtual Samples
Board - Staff Facilities and Workshop**

The Planning Act 2008



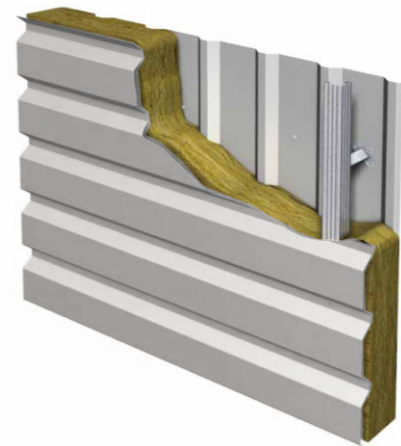
Applicant: SSE Slough Multifuel Limited

May 2023 – Deadline 5

Walls



Field Cladding - Cladding Type A
Euroclad Elite 55 Reverse Profile Insulated
Horizontal Cladding



Euroclad Elite 55 Reverse Profile
Insulated Horizontal Cladding



Finish - TATA Steel Colourcoat
Prisma Solid Colour Palette

Living Green Wall



Pre-grown and fully established ANS LivingWall modules
Place ANS LivingWall modules on hanging rails
Complete first row
Install irrigation pipe on each row of modules
Build the living wall up layer by layer. Each module is planted to give desired effect.
Finished wall connected to irrigation system.

- ANS Group Global Modular Living Wall System or similar.
Main planting mix:
- Euonymus fortune ' Dart's Blanket'
 - Hedera Helix ' Wonder'
 - Lonicera Nitida 'Maigrun'
 - Phyllitis Scolopendrium
 - Vinca Minor 'Gertrude Jekyll'
- Feature Planting:
- Erysimum 'Bowles's Mauve'
 - Vinca Minor 'Bowles Blue'

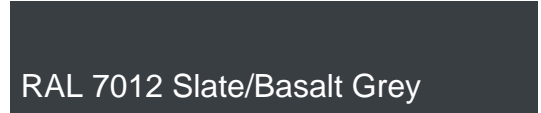
Planting mix is shown as illustrative and is subject to availability together with further discussion with appointed living wall supplier.

Louvres



Polyester Powder Coated (PPC)
RAL 7035 Oyster

Windows



Schueco Aluminium double glazed window system.
Finish - Polyester Powder Coated (PPC)
30% gloss, RAL 7012 Slate/Basalt Grey

External



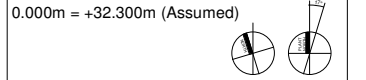
Perimeter Security Fencing
2.4m High Galvanised Steel
Palisade Fencing and Matching
Security Gates



Broxap or Similar Cycle shelter with
4No. Sheffield Stands Providing
8No. Cycle Spaces in Total Colour -
RAL 7016 Anthracite Grey

Notes:
Read in conjunction with Weedon Architects Drawing Nos.:
P-3258 VAA-WA-50081040 - Staff Facilities & Workshop
North and East Elevations
P-3258 VAA-WA-50081041 - Staff Facilities & Workshop
South and West Elevations
This drawing has been compiled in order to discharge
Condition 3 of the approved scheme only.

Copyright of this drawing is vested in the Architect and it must not be copied or reproduced without consent. Figured dimensions only are to be taken from this drawing. All contractors must visit the site and be responsible for taking and checking all dimensions relative to their work. Weedon Architects to be advised of any variation between drawings and site conditions. Refer and print in colour as required. DO NOT SCALE OFF THIS DRAWING. IF IN DOUBT ASK



Discipline Architectural Job No 16136

Doc. No. FMFEL
VAA-WA-50081100_0.0
Virtual Samples Board

Rev	Date	SKM	AMG	PJC	ISSUED FOR PLANNING
Drawn	Modified	Checked	Approved	Modification	
0.0	21/11/19	SKM	AMG	PJC	ISSUED FOR PLANNING
General tolerances					Legend Part List
DIN ISO 2768 - mK					H2 = Supplied by Hitachi Zosen AG
DIN 1583 - 1					SP = Spare Part
EN ISO 1392 - BF					WP = Wear Part
EN ISO 5817					PP = Purchased Part
Suitability S1					Reservation of rights ISO 16016
AIC 10AAF202					Copying of this document and give it to others and the use of communication of the content thereof are forbidden, without express authority. Offenders are liable to the payment of damages. All rights are reserved in the event of the grant of a patent or the registration of a utility model or design.
Status Planning					Hitachi Zosen Inova AG
Scale A3					Hitachi Zosen Inova AG
Size A3					Hitachi Zosen Inova AG
Hitachi Zosen INOVA					Hitachi Zosen Inova AG
Project Name					Virtual Samples Board
Project Name					Staff Facilities & Workshop
Project Name					Planning Drawing
Project-Nr					Document No.
P-3258					50081100
Replaced by:					Replaced for:
Revision					0.0
Sht: 1 / 1					